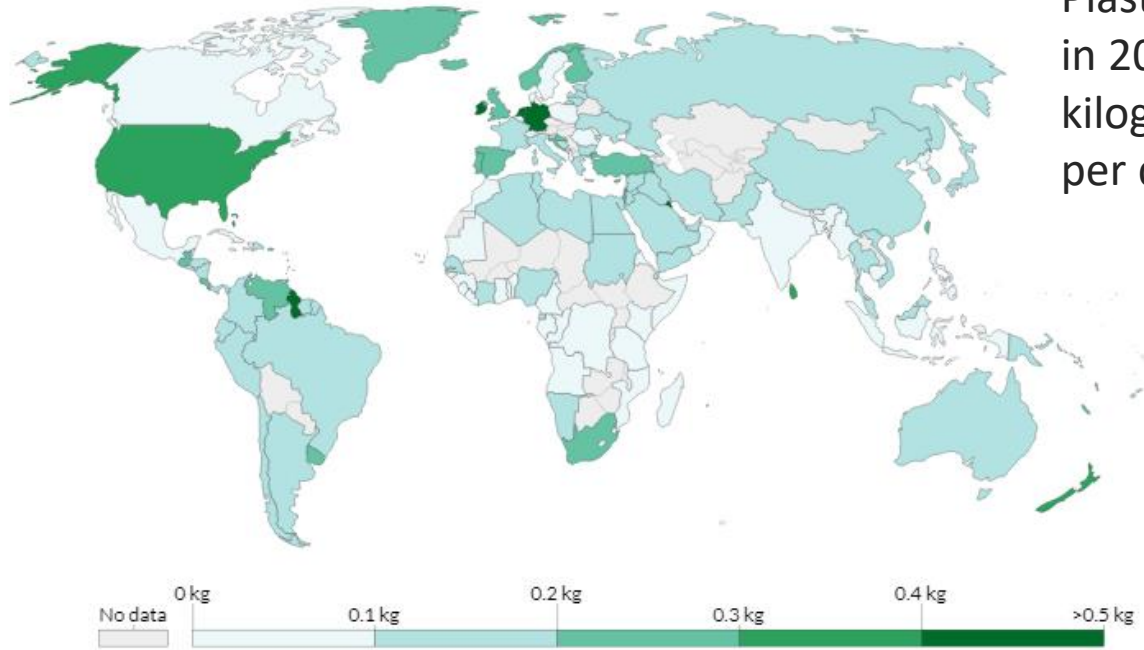




NORDIC PLASTIC RECYCLING

Plastic waste per capita

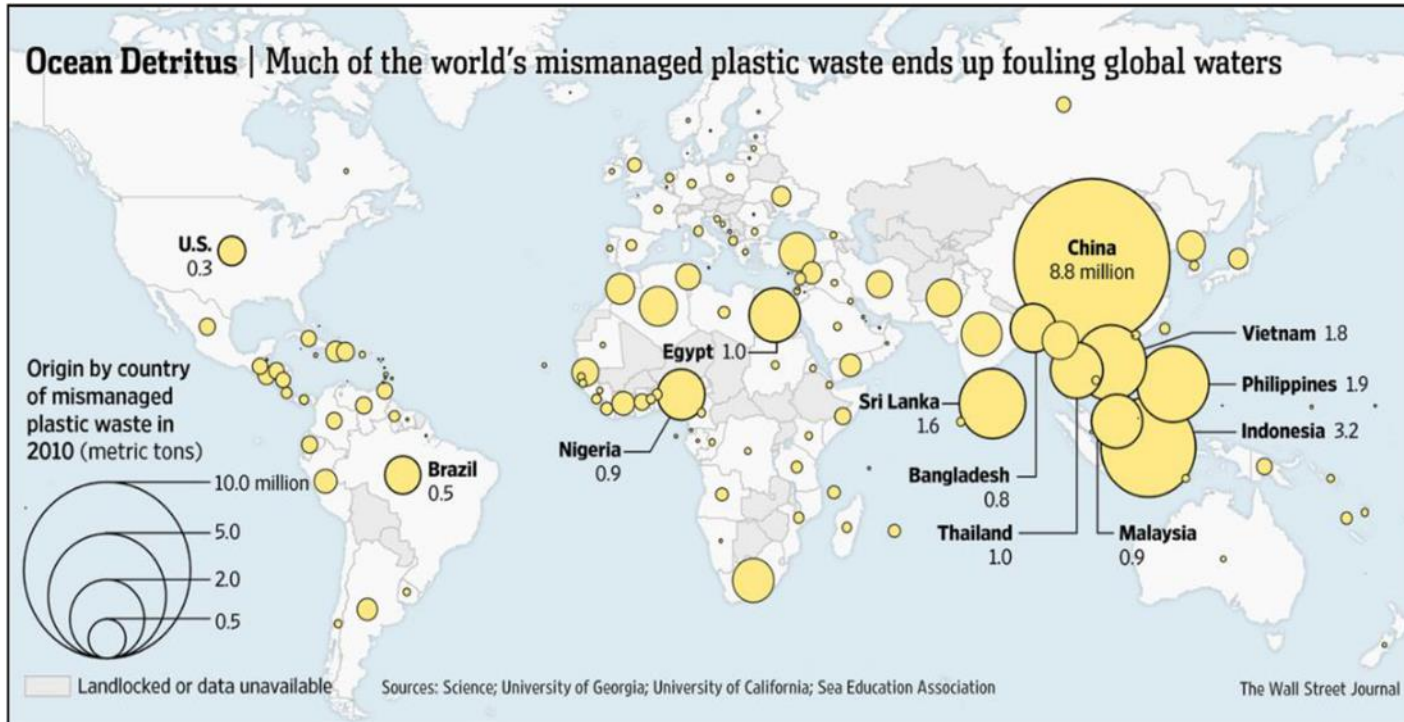


Plastic waste generated in 2010 measured in kilograms per person per day.

Source: Jambeck et al. (2015)

CC BY

Where do we find the biggest problem?



The players in Nordic Plastic Recycling AS



- Partner Plast AS is located at Åndalsnes and has as its main activity to produce rotational moulded products for the offshore and seismic market.
- Partner Plast wants to recycle its own waste material from production, as well as give its customers the opportunity to return and recycle end-of-life products.



- Cipax AS is located at Bjørkelangen and has rotational moulding of recreational boats as its largest market segment.
- Cipax wants to give customers the opportunity to return end-of-life products. Through the establishment of Nordic Plastic Recycling, they see the possibility of efficient and environmentally friendly return schemes.



- Astero AS is located in Molde and in Åndalsnes and its main activity is to qualify people for working.
- Through recycling, Astero wants to train and qualify people who can later apply to the plastics- or other industry.



- Romsdal Innovation is a company located in Rauma municipality, which is responsible for investment and maternity assistance.
- The company is located in the Utrøna Innovation Center in Åndalsnes and is owned by 10 companies in the Romsdalen region.

Scope

- Too small amounts of plastics are collected in general.
- Collected material must be sorted in correct qualities and washed before recycling.
- Need for better sorting technology and knowledge.
- The volume and quality of recycled material must be increased.

- The future customer demands a guarantee from us as a responsible manufacturer that the product actually is recycled after end of life cycle - and not ends up in a landfill.

Mission

Approximately two out of three waste companies have not initiated additional measures to sort out rigid plastics, pending that effective downstream solutions must be in place. 'Business as usual' means that large quantities of plastics that could have been used in new products goes to waste incineration or put on landfill. Some companies have come far, but we are still far from the target.



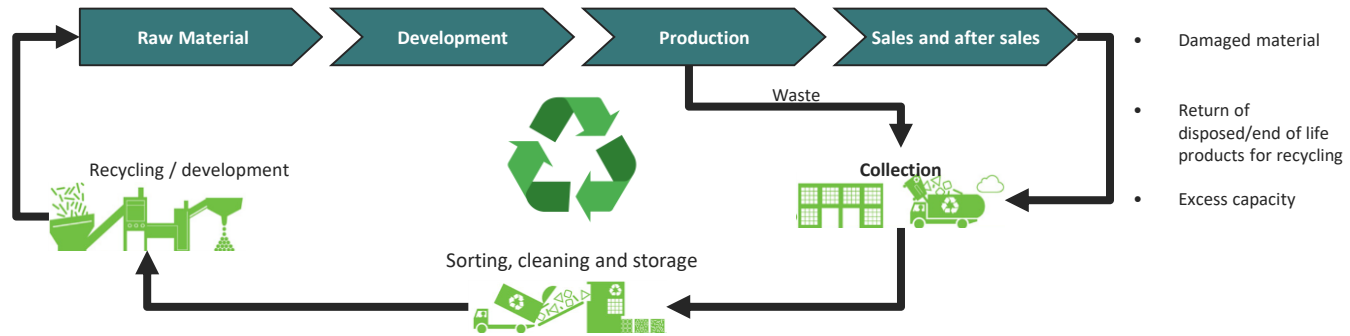
NPR aims to make business out of being the plastic manufacturer's partner for efficient recycling of right quality

Process

Standard value chain for production of plastic products



NPR aims to create close link between the manufacturers and the recycling process



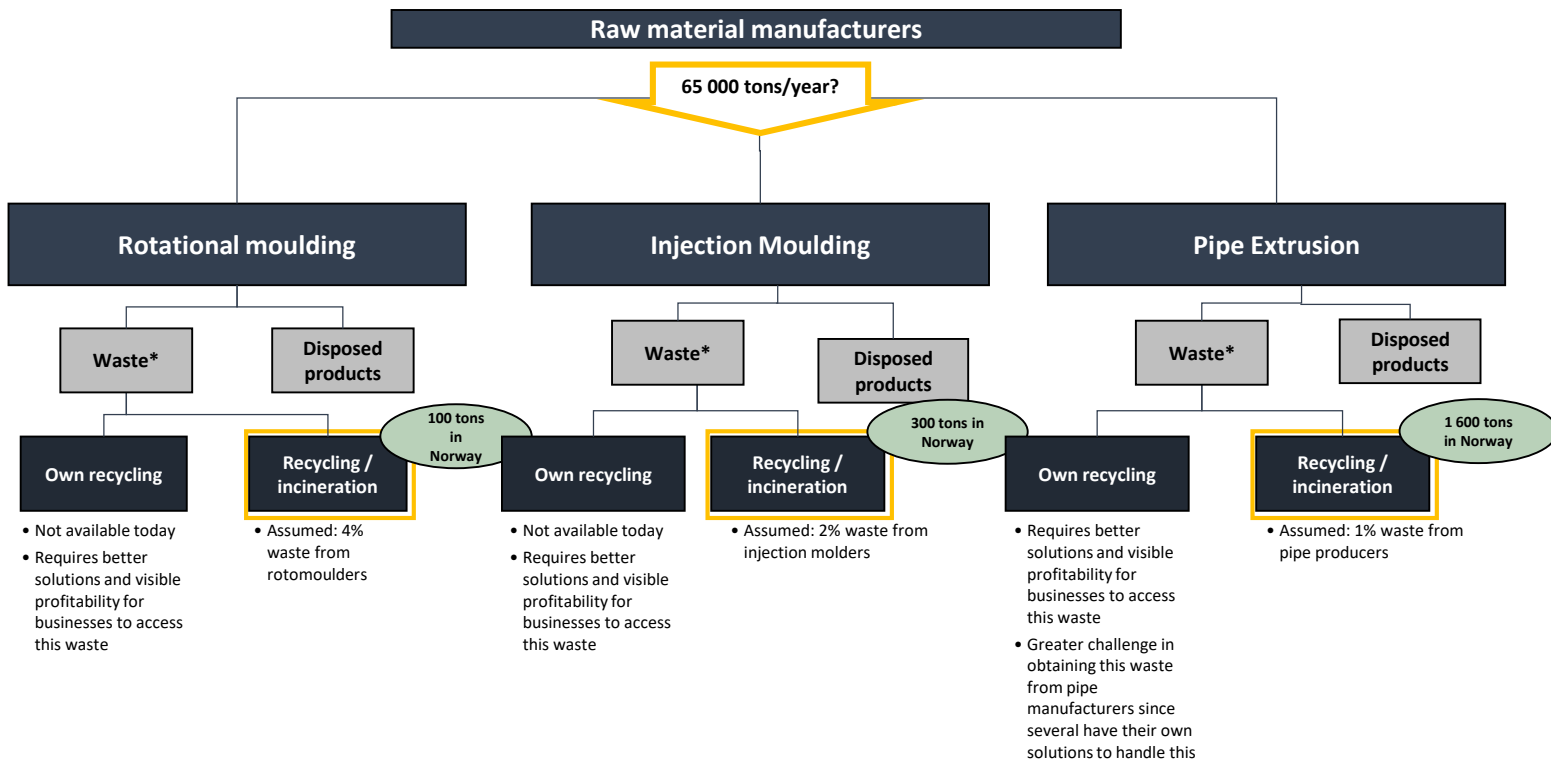
- So far, large parts of the economy have been linear, a process that goes from extraction of resources to production of goods and services, to consumption where the products eventually end up as waste.
- Nordic Plastic Recycling has a vision to take recycling a step further and be in front of the "green shift" in the Nordic plastic industry
- A high standard for recycling must be defined, not only from plastic raw material, but also from residual products to waste material delivered.
- Through recycling, NPR will take environmental responsibility at the same time as recycled material can be reused in the industry

Business Idea

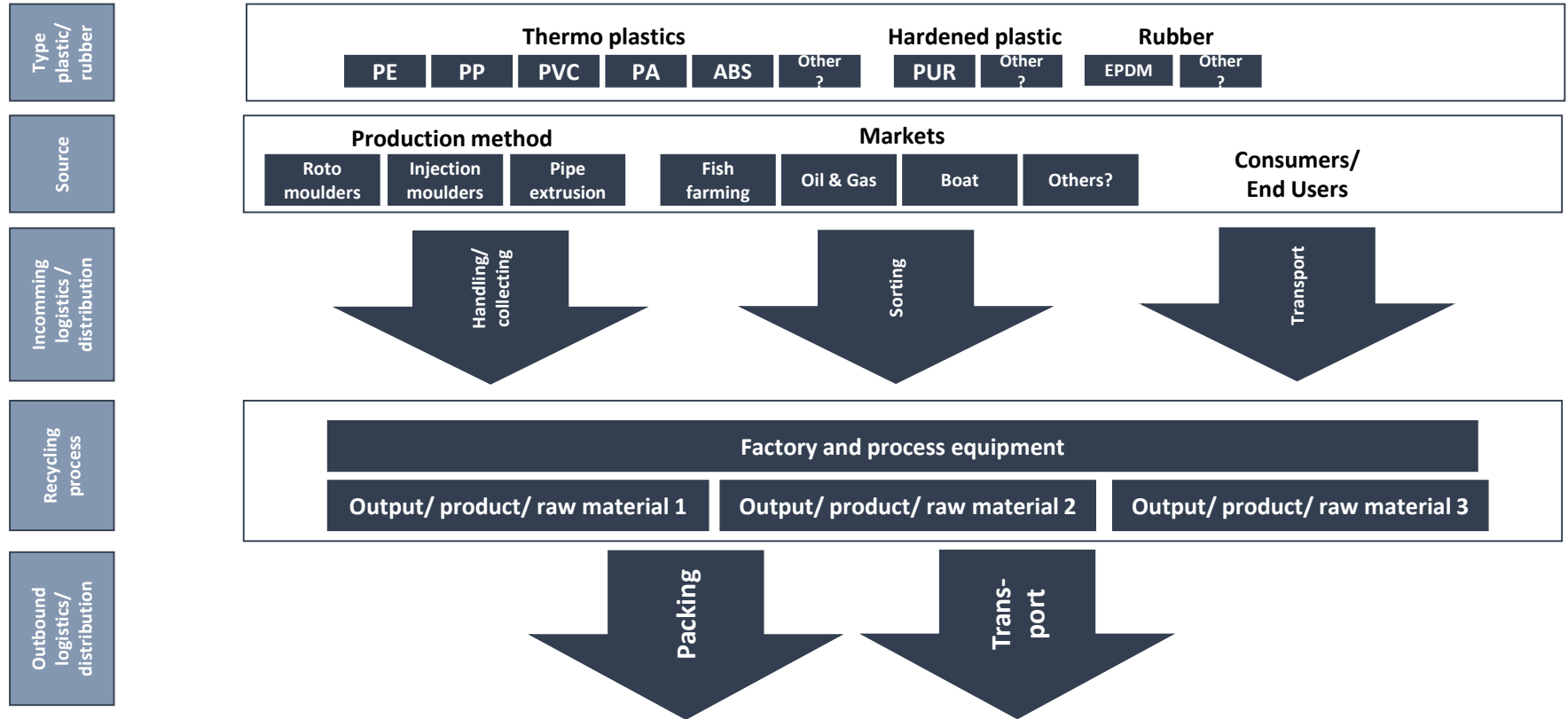
Nordic Plastic Recycling aims to recycle returned plastic materials to such high quality and at a price that makes the raw materials attractive to Nordic plastic manufacturers. This must be done by own employees and through work training.

Nordic Plastic Recycling AS will mainly concentrate on plastics used in rotational molding, injection molding and pipe extrusion.

Value chain for material flow (Norway)



Nordic Plastic Recycling AS will be a leading Scandinavian player in the recycling of plastics and development of new products



Secure access to enough and correct material

Raw materials we focus on is PE from

- Rotational moulding
- Injection moulding
- Pipe extrusion

Dialogue with the manufacturers and agreements on delivery of material.

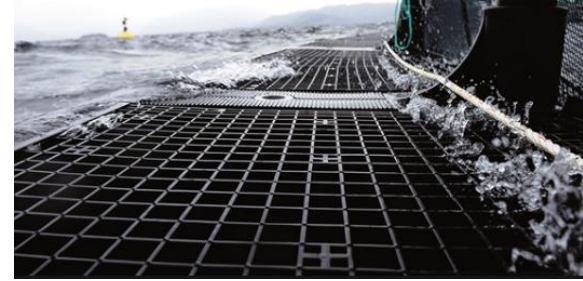
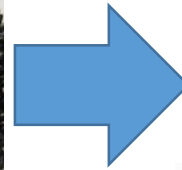
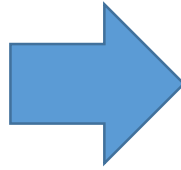
Discarded and obsolete products from:

- Rotational moulding (Customers)
- Injection moulding (Customers)
- Pipe extrusion (Customers)
- Waste stations / Disposal

Establish arrangements for used products/equipment. This can be returned via the manufacturers, end users, dealers or waste management systems.



We are developing step by step to meet the market's goals of circular economy in practice



THANK YOU!

